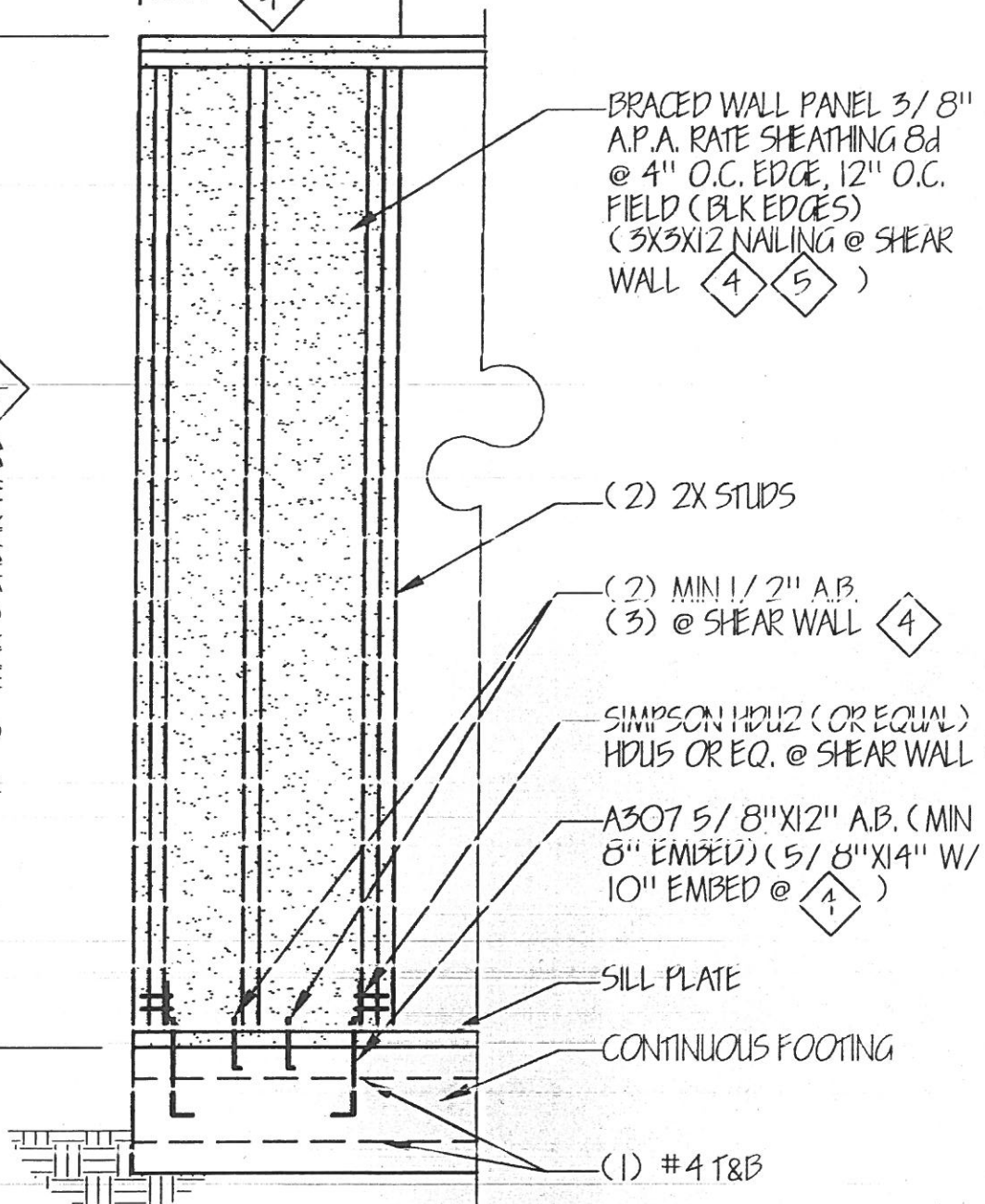


8'-0" PANEL HGT. = MIN. WIDTH OF 24"  
 9' TO 10' PANEL HGT. = MIN. WIDTH OF 2'-8"  
 (10'-0" MAX @ SHEAR WALL)

15'-0" MAX @ SHEAR WALL

PANEL WIDTH  
 MIN WIDTH =  
 HGT / 3.5 @ SHR.  
 WALL



BRACED WALL PANEL 3/8" A.P.A. RATE SHEATHING 8d @ 4" O.C. EDGE, 12" O.C. FIELD (BLK EDGES) (3X3X12 NAILING @ SHEAR WALL)

(2) 2X STUDS

(2) MIN 1/2" A.B.  
 (3) @ SHEAR WALL

SIMPSON HDU2 (OR EQUAL) HDU5 OR EQ. @ SHEAR WALL

A307 5/8" X 12" A.B. (MIN 8" EMBED) (5/8" X 14" W/ 10" EMBED @ )

SILL PLATE

CONTINUOUS FOOTING

(1) #4 T&B

2 3/8" APA RATED SHEATHING W/ 8d NAILS AT 4" O.C. EDGES, 12" O.C. FIELD. (HOLDDOWNS NOT REQUIRED) MIN. PANEL WIDTH OF 4'-0"

3 MIN. 1/2" GYP. BD. W/ 5d COOLER OR WALL BOARD NAILS @ 7" O.C. W/ 3" SHOT PINS @ 18" O.C. INTO TREATED BOT. PLATE (ER#1147) (8' MIN. PANEL WIDTH OR 4' BOTH SIDES) 1:1 HEIGHT TO WIDTH

4 SEE NOTES ABOVE FOR HOLDDOWNS

5 HOLDDOWNS NOT REQUIRED WHEN PANEL WIDTH EXCEEDS (HEIGHT / 1.7)

SCALE:  
 N.T.S.



# TYP. SHEAR WALL DESIGN